



History & Archive Workgroup Relational Database

The various component sub-groups within the workgroup have historically managed their own independent lists, catalogues and collections. The database sub-group is investigating the nature of the various datasets, how they inter-relate and how, in combining them, they can provide a more valuable research resource.

The product of this work is a web site that allows researchers to interrogate the database, provides new views of the information and will offer opportunities for all users to add to or edit the information.

The web site is at:

<http://www.bellringinghistory.org.uk/>

The data tables can be grouped as:

- Library tables
- Biography tables
- Obituary Index tables
- Rolls of honour tables
- Peal Board tables
- Society tables
- Carter Ringing Machine tables
- Web Site lookup tables



History & Archive Workgroup Relational Database

In the following pages, the tables relating to each area are coloured blue. Relationships to other areas are black & white.

At the head of each table is the table name with the current number of rows in brackets.

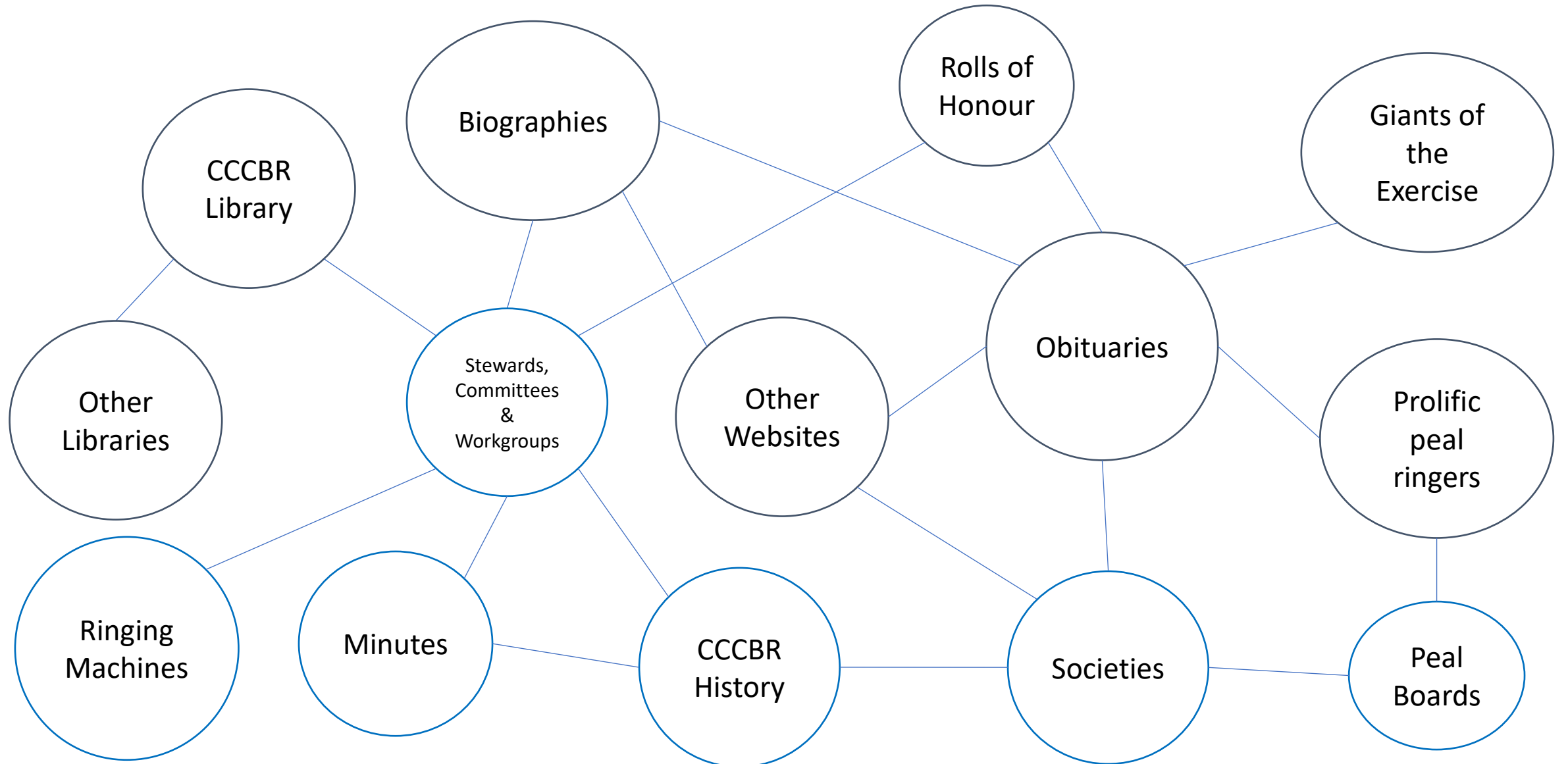
In a 'one to many' relationship, a reference table will have an ID column. Each value in that column is unique. This is the "one" side of the relationship. Other tables can be "linked" to that table if they have a column with a corresponding value. That is the "many" side of the relationship. The point of the arrow is at the "many" end of the line.



e.g. TBL_BIOGRAPHY linked with TBL_BIOGRAPHY_PHOTO

ID	FORENAMES	SURNAME	BIOGRAPHY_ID	PHOTO_FILE_NAME
613	William Norman	Park	613	ParkWN1.jpg
613	William Norman	Park	613	ParkWN2.jpg

High level relationships



Library Tables

TBL_INDEX_TEXT (43210)	
ID	
INDEX_TEXT	

TBL_INDEX_PUB_PAGE (92079)	
PUBLICATION_PAGE	
CATALOGUE_ID	
INDEX_TEXT_ID	

TBL_PDF (9628)	
ID	
PDF_NAME	
CATALOGUE_ID	
SOURCE_ID	
PUBLICATION_DATE	

TBL_PDF_PAGE (148681)	
PDF_ID	
PUBLICATION_PAGE	
PDF_PAGE	

TBL_SOURCE_URL (20)	
ID	
SOURCE_NAME	
URL	

TBL_CATALOGUE_TO_SECTION (5155)	
CATALOGUE_ID	
SECTION_ID	

TBL_SECTION (37)	
ID	
SECTION	

TBL_LIBRARY (26)	
ID	
LIBRARY_NAME	

TBL_CATALOGUE (4402)	
ID	
ACQUISITION_NUMBER	
TITLE	
AUTHOR	
WITHDRAWN_IND	
LIBRARY_ID	

Other libraries can be included in this structure.

The Library tables describe the contents of the Central Council Library and associated resources.

Obituary Index Tables

TBL_OBIT_REFERENCE	
OBIT_PERSON_ID	
YEAR	
DATE	
PAGE	
PDF_ID	
PUBLICATION_PAGE	

Pdf scans allow the website to link directly to articles within some publications. This works for both indexes and obituaries.

Biography Tables

TBL_BIOGRAPHY (1924)
ID
OBIT_ID
TITLE
FORENAMES
SURNAME
ADDITIONAL_NOTES
DOB
PLACE_OF_BIRTH
TRADE_OR_PROFESSION
BEGAN_RINGING_AT
BEGAN_RINGING_YEAR
FIRST_PEAL_DATE
FIRST_PEAL_METHOD
FIRST_PEAL_TOWER
OTHER_TOWERS
CC_MEETINGS_ATTENDED
CC_OFFICES_HELD
ASSOCIATION_OFFICES_HELD
NOTEABLE_PERFORMANCES

TBL_BIOGRAPHY_PHOTO (727)
BIOGRAPHY_ID
PHOTO_FILE_NAME

The Biography tables describe the biographies of Central Council members and other notable ringers.

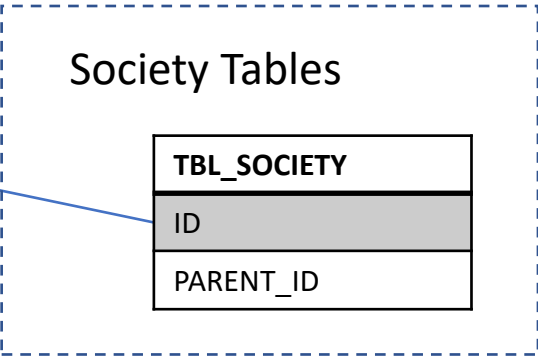
Obituary Tables

TBL_OBIT_PERSON
ID
TITLE

Links to other areas provide alternative sources for researchers and data checkers.

DETAILS_OF_PEALS
OTHER_NOTES
DATE_OF_DEATH
AGE_AT_DEATH
WHERE_BURIED
OBITUARY_REFERENCE
PPR_FILE_NAME
PHP_URL
THOUSAND_PEAL_DATE
SCAN_FILE_NAME
PDF_FILE_NAME
RECORD_DATE

TBL_CC_MEMBER_TO_SOCIETY (34844)
BIOG_ID
SOCIETY_ID
MEMBER_STATUS_ID
INFORMATION_SOURCE_ID
MEMBER_YEAR
PRESENT_AT_MEETING



TBL_SOCIETY
ID
PARENT_ID

TBL_CC_MEMBER_STATUS (8)
ID
DESCRIPTION

TBL_BIOGRAPHY_PERFORMANCES (11544)
BIOG_ID
PERFORMANCE_TYPE_ID
TOTAL

TBL_INFORMATION_SOURCE (2)
ID
PARENT_ID

Obituary Index Tables

Biography Tables

TBL_BIOGRAPHY
ID
OBIT_PERSON_ID

Rolls of Honour Tables

TBL_ROLL_OF_HONOUR
ID
WAR

TBL_OBIT_PERSON (11647)
ID
TITLE
FORENAMES
AKA
SURNAME
POSTNAME
OCCUPATION
PLACE
AGE
DATE_OF_BIRTH
DATE_OF_DEATH
DATE_OF_FUNERAL
CAUSE_OF_DEATH
ROLL_OF_HONOUR_ID
BIOGRAPHY_ID
NOTES

TBL_OBIT_REFERENCE (14458)
OBIT_PERSON_ID
YEAR
DATE
PAGE
PDF_ID
PUBLICATION_PAGE

TBL_OBIT_PLACE (11706)
OBIT_PERSON_ID
PLACE

TBL_OBIT_SOCIETY (362)
OBIT_PERSON_ID
ASSOCIATION_NAME
SOCIETY_ID

The Obituaries tables contain the index of published obituaries along with links to pdf copies of the publications.

Library Tables

TBL_PDF_PAGE
PDF_ID
PUBLICATION_PAGE
PDF_PAGE

Society Tables

TBL_SOCIETY
ID
PARENT_ID

Rolls of Honour Tables

Obituary Index Tables

TBL_OBIT_PERSON
ID
ROLL_OF_HONOUR_ID

Society Tables

TBL_SOCIETY
ID
PARENT_ID

The use of a common lookup table helps with consistency and future analysis.

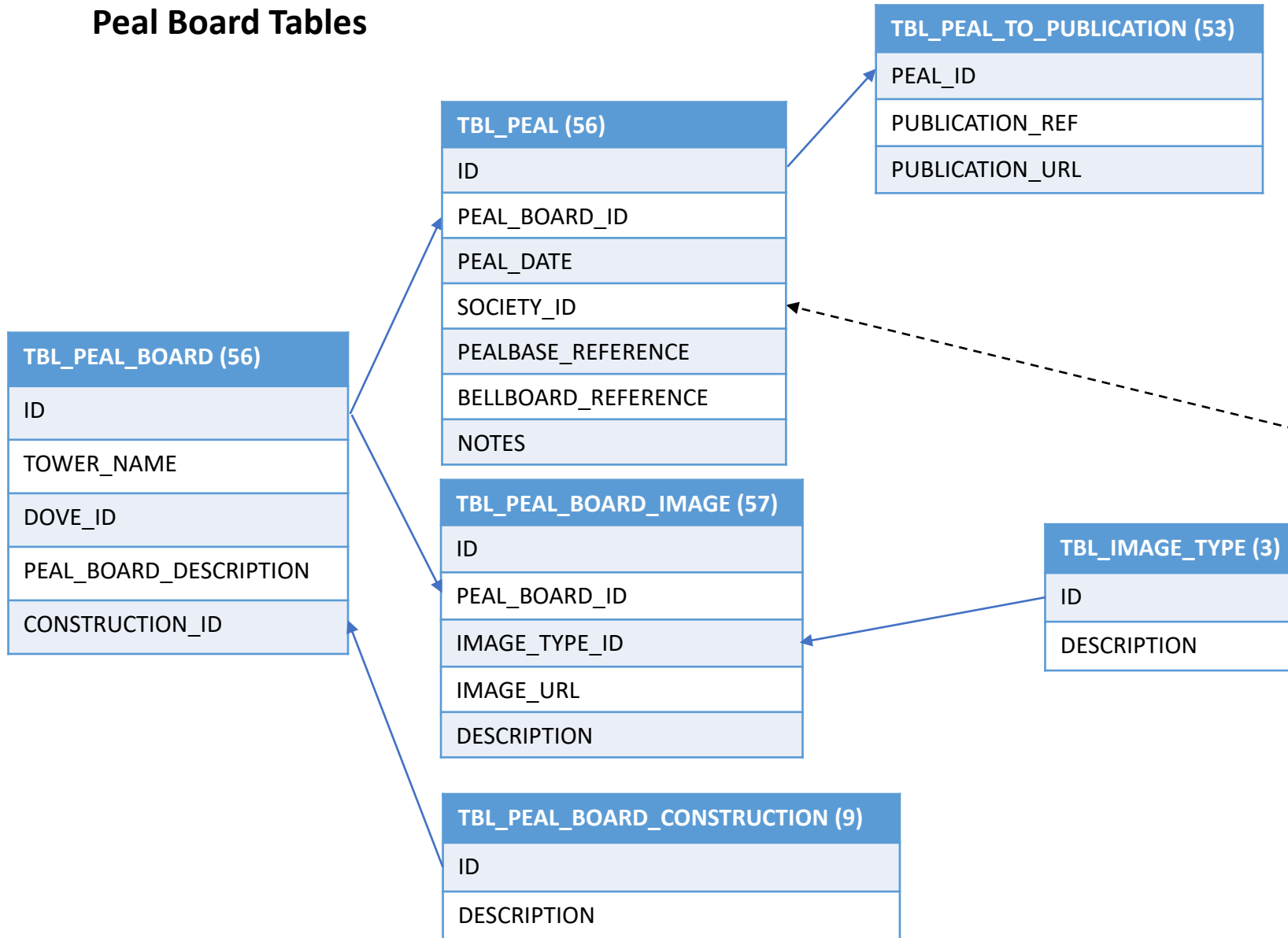
TBL_ROLL_OF_HONOUR (1737)
ID
WAR
ORIGINAL_URL
TOWER
TOWER_LAT
TOWER_LNG
SOCIETY
SOCIETY_ID
ROH_SEARCH_NAME
FULL_NAME
DATE_OF_DEATH
AGE
REGIMENT
RANK
CEMETERY_ID
COUNTRY
MEMORIAL
CWGC_NUMBER
NOTES
DECORATIONS

The Rolls of Honour tables contain details of ringers who have fallen in conflicts along with some associated detail such as coordinates for on-line mapping.

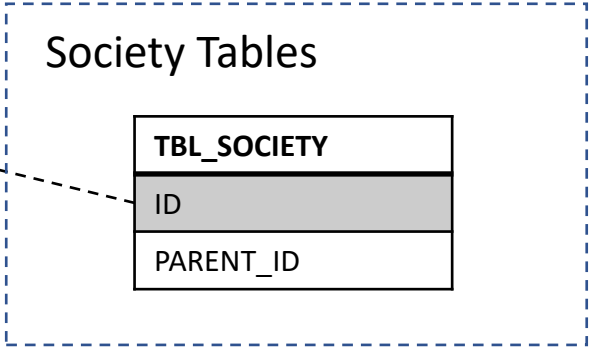
TBL_ROLL_OF_HONOUR_DATE (2000)
ID
DATE_OF_DEATH
MONTH_TEXT

TBL_CEMETERY (720)
ID
CEMETERY
COUNTRY
CEMETERY_LAT
CEMETERY_LNG

Peal Board Tables



The Peal Board tables contain details of peal boards. This is a relatively new piece of work and these tables represent an exploration of the required data structure.



Society Tables

Relationship 'A' handles branches or districts of societies
 A branch or district has its own unique ID but PARENT_ID is populated with the ID of the parent society.

TBL_BADGE (5)
ID
SOCIETY_ID
IMAGE_FILE
BADGE_NAME
DESCRIPTION
MANUFACTURER
DATE_FROM
DATE_TO

TBL_BADGE_REF (9)
BADGE_ID
PDF_ID
PUBLICATION_PAGE
PUBLICATION_TEXT
PUBLICATION_REF
NOTES

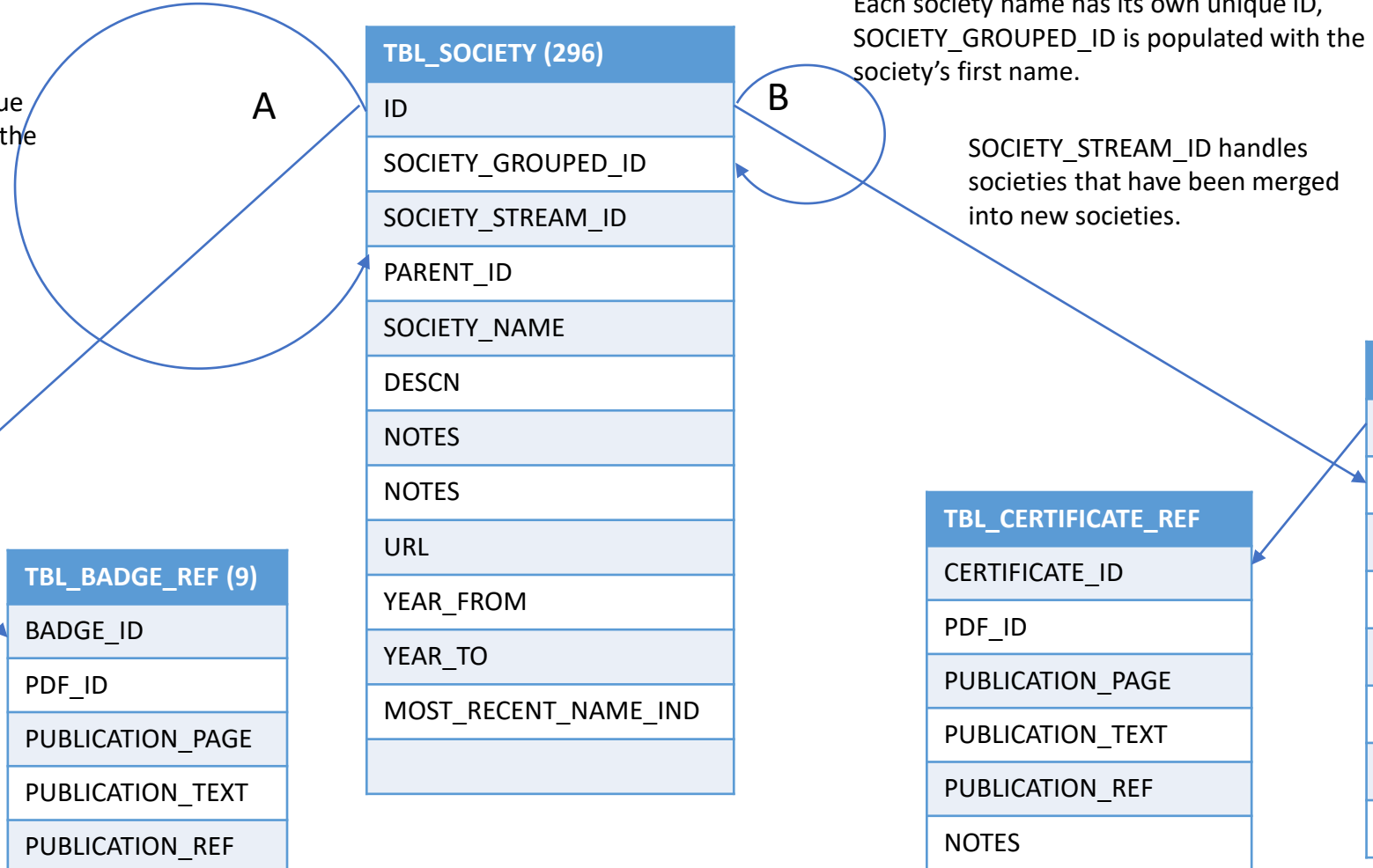
TBL_SOCIETY (296)
ID
SOCIETY_GROUPED_ID
SOCIETY_STREAM_ID
PARENT_ID
SOCIETY_NAME
DESCN
NOTES
NOTES
URL
YEAR_FROM
YEAR_TO
MOST_RECENT_NAME_IND

Relationship 'B' handles societies whose name has changed.
 Each society name has its own unique ID, SOCIETY_GROUPED_ID is populated with the ID of the society's first name.

SOCIETY_STREAM_ID handles societies that have been merged into new societies.

TBL_CERTIFICATE_REF
CERTIFICATE_ID
PDF_ID
PUBLICATION_PAGE
PUBLICATION_TEXT
PUBLICATION_REF
NOTES

TBL_CERTIFICATE
ID
SOCIETY_ID
IMAGE_FILE
CERTIFICATE_NAME
DESCRIPTION
DESIGNER
DATE_FROM
DATE_TO



Carter Ringing Machine Tables

TBL_CRM_METHOD (8)
ID
METHOD_NAME
STAGE_ID
DRUMS_H
DRUMS_B

TBL_CRM_PARTS_LIST (364)
ID
PART_NAME
NUM
MATERIAL
DIMENSIONS
COMMENTS
LASER
PHOTO_ID
DWG
ASSY_ID

TBL_CRM_METHOD_PEG_SETTINGS (32)
CRM_METHOD_ID
ROW
HANDSTROKE
BACKSTROKE

TBL_CRM_STAGE (8)
ID
STAGE_NAME

TBL_CRM_ASSEMBLY (9)
ID
ASSEMBLY_NAME

The Ringing Machine tables contain the parts catalogue and details of how to program the machine with different methods.

A coded facility to convert standard place notation to machine settings is planned rather than this limited lookup approach.

Other ringing machines could be included in this although it is likely that the different designs and structures will require different data structures.

Web Site Lookup Tables

TBL_CCCBR_MINUTES (122)
ID
DESCRIPTION
URL

TBL_DECADE (43)
DECADE_TEXT
DECADE_NUMBER
FIRST_YEAR
LAST_YEAR

TBL_INITIAL_LETTER (26)
INITIAL_LETTER

TBL_HOME_PAGE_IMAGE (5)
ID
IMAGE
DESCRIPTION
TARGET_URL

TBL_YEAR (142)
YEAR

There are a small number of un-attached tables that are used as lookups in database queries and to populate web pages.